



CONSTRUCTION MACHINERY AND TELESCOPIC FORKLIFT > MINI AND MIDI EXCAVATORS

(E-72) KOBELCO SK10SR-2E

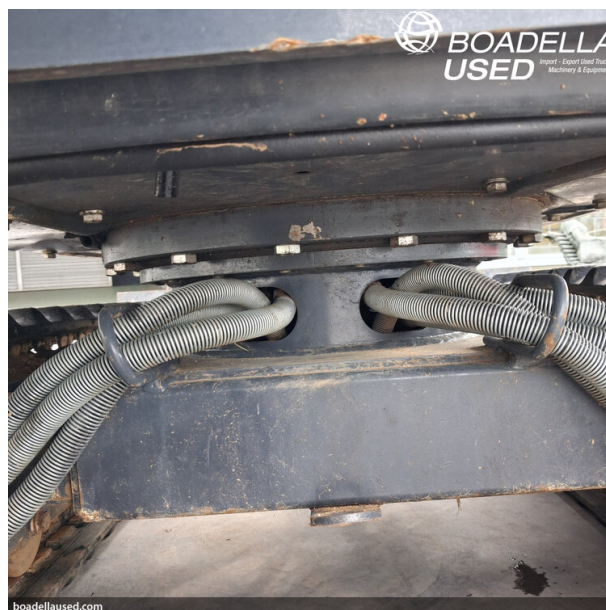
Ref. 111140G



Yanmar 2TNV70WYB diesel engine, 2 cylinder, 4 stroke, water-cooled, swirl chamber. Net power: 5.9 kW. Maximum digging reach: 3.30 m; maximum ground level reach: 3.21 m; maximum digging depth: 1.75 m. Maximum dumping height: 2.32 m. Operating weight: 1065 kg. For more information: 669172396.

MAKE	KOBELCO
MODEL	SK10SR-2E
YEAR	Placa 2024
KM/HOUR	+ 581
STATE OF FRONT WHEELS	75%
DOCUMENTS	- CE
ADDITIONAL EQUIPMENT	- Equipada con 4 cazos
PRICE	16.575,00â,¬ + IVA











BOADELLA USED

Import - Export Used Trucks, Machinery & Equipments



BOADELLA USED
Pol. Ind. Girona - ctra. N-II, km. 706,5
17457 Riudellots de la Selva - Girona - SPAIN
www.boadellaused.com

T. 972 478 300

BOADELLA

GROUP



BOADELLA USED

Import - Export Used Trucks, Machinery & Equipments



BOADELLA USED

Pol. Ind. Girona - ctra. N-II, km. 706,5
17457 Riudellots de la Selva - Girona - SPAIN
www.boadellaused.com

T. 972 478 300

BOADELLA

GROUP